



Essential LED tubes T5 Mains

CorePro LEDtube 1200mm 16W840 G5 I MX

The Essential LEDtube T5 is an affordable LED solution suitable for replacing T5 fluorescent lamps. Thanks to a unique design, Philips Essential LED tube T5 Mains can be directly installed in luminaires operating on mains power connection. The product provides a natural lighting effect for use in general lighting applications, as well as instant energy savings – an environmentally friendly solution.

Product data

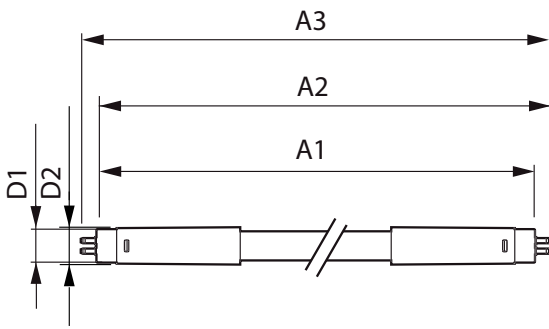
| General information | | Lamp Current (Max) | |
|---------------------------------------|---------------------|---------------------------------|---------|
| Cap-Base | G5 [G5] | Lamp Current (Min) | 175 mA |
| EU RoHS compliant | Yes | Starting Time (Nom) | 70 mA |
| Nominal Lifetime (Nom) | 30000 h | Warm Up Time to 60% Light (Nom) | 0.5 s |
| Switching Cycle | 50000X | Power Factor (Nom) | 0.92 |
| Voltage (Nom) | | 100-240 V | |
| Light technical | | Temperature | |
| Color Code | 840 [CCT of 4000K] | T-Ambient (Max) | 45 °C |
| Beam Angle (Nom) | 200 ° | T-Ambient (Min) | -20 °C |
| Luminous Flux (Nom) | 1850 lm | T-Storage (Max) | 65 °C |
| Color Designation | Cool White (CW) | T-Storage (Min) | -40 °C |
| Correlated Color Temperature (Nom) | 4000 K | T-Case Maximum (Nom) | 70 °C |
| Luminous Efficacy (rated) (Nom) | 115.00 lm/W | Controls and dimming | |
| Color Consistency | <6 | Dimmable | No |
| Color Rendering Index (Nom) | 80 | Mechanical and housing | |
| LLMF At End Of Nominal Lifetime (Nom) | 70 % | Product Length | 1200 mm |
| Operating and electrical | | | |
| Input Frequency | 50 to 60 Hz | | |
| Power (Nom) | 16 W | | |

Essential LED tubes T5 Mains

| | |
|---------------------------------|--|
| Bulb Shape | Tube, double-ended |
| Approval and application | |
| Energy Saving Product | Yes |
| Approval Marks | CE marking RoHS compliance KEMA Keur certificate |
| Energy Consumption kWh/1000 h | - kWh |
| Product data | |
| Full product code | 871869666752100 |

| | |
|---------------------------------|---------------------------------------|
| Order product name | CorePro LEDtube 1200mm 16W840 G5 I MX |
| EAN/UPC - Product | 8718696667521 |
| Order code | 929001275212 |
| Numerator - Quantity Per Pack | 1 |
| Numerator - Packs per outer box | 20 |
| Material Nr. (12NC) | 929001275212 |
| Net Weight (Piece) | 0.124 kg |

Dimensional drawing



| Product | D1 | D2 | A1 | A2 | A3 |
|--|---------|-------|---------|-----------|-----------|
| CorePro LEDtube 1200mm 16W840 G5 I MX | 15.8 mm | 19 mm | 1149 mm | 1156.1 mm | 1163.2 mm |

CorePro LEDtube 1200mm 16W840 G5 I MX

