



# MHN-TD

MHN-TD 150W/842 RX7s 1CT

Double-ended quartz Metal-halide lamp

## Product data

### • General Characteristics

Cap-Base	RX7s
Cap-Base Information	na [-]
Bulb	TD
Bulb Finish	Clear
Operating Position	p45 [Parallel +/-45D or Horizontal(HOR)]
Life to 5% failures	5000 hr
Life to 20% failures	8000 hr
Life to 50% failures	10500 hr

### • Light Technical Characteristics

Color Code	842 [CCT of 4200K]
Color Rendering Index	85 Ra8
Color Designation (text)	Cool White
Color Temperature	4200 K
Chromaticity Coordinate X	370 -
Chromaticity Coordinate Y	370 -
Luminous Flux Lamp EM	12900 Lm
Luminous Efficacy Lamp EM	86 Lm/W
Lumen Maintenance 2000h	80 %
Lumen Maintenance 5000h	75 %
Lumen Maintenance 10000h	70 %
Luminance Average EM	1100 cd/cm <sup>2</sup>

### • Electrical Characteristics

Lamp Wattage	150 W
Lamp Wattage EM	150.0 W
Lamp Voltage	98 V
Lamp Current EM	1.8 A
Ignition Peak Voltage	3500 (min) V
Dimmable	No

### • Environmental Characteristics

Mercury (Hg) Content	13 mg
----------------------	-------

### • Luminaire Design Requirements

Pinch Temperature	280 (max) C
Bulb Temperature	650 (max) C

### • Product Dimensions

Insertion Length B	132.0 (max) mm
Overall Length C	135.4 (max) mm
Diameter D	23.0 (max) mm
Light Center Length L	66.0 mm
Arc Length O	17.8 mm
Light Center Length L [inch]	2.60 in
Overall Length C [inch]	5.33 (max) in
Diameter D [inch]	0.89 in

### • Product Data

Order code	928076505192
Full product code	928076505192
Full product name	MHN-TD 150W/842 RX7s 1CT

**PHILIPS**  
sense and simplicity

# MHN-TD

Order product name MHN-TD 150W/842 RX7s 1CT/12  
Pieces per pack 1  
Packing configuration 12  
Packs per outerbox 12  
Bar code on pack - EAN1 8711500733993

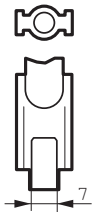
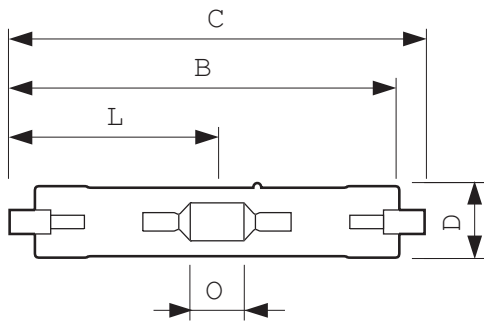
Bar code on outerbox - EAN3 8711500183675  
Logistic code(s) - 12NC 928076505192  
ILCOS code MD-150/42/1B-H-Rx7s-/H  
Net weight per piece 0.020 kg

## Warnings and Safety

- Use only in totally enclosed luminaire, even during testing (IEC61167, IEC 62035, IEC60598)

- The luminaire must be able to contain hot lamp parts if the lamp ruptures
- Control gear must include end-of-life protection (IEC61167, IEC 62035)

## Dimensional drawing

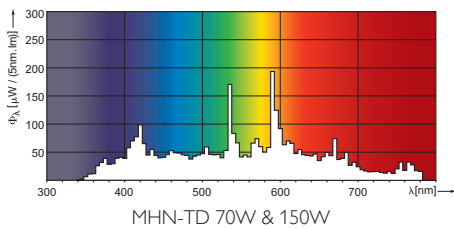


RX7s

## MHN-TD, RX7s

Product	C (Max)	D (Max)	O (Norm)
MHN-TD 150W/842 RX7s	135.4	23.0	17.8

## Photometric data





© 2012 Koninklijke Philips Electronics N.V.  
All rights reserved.

Specifications are subject to change without notice. Trademarks are the property of Koninklijke Philips Electronics N.V. or their respective owners.

[www.philips.com/lighting](http://www.philips.com/lighting)

2012, March 8  
data subject to change