



# MHN-TD

MHN-TD 150W/842 RX7s 1CT

Double-ended quartz Metal-halide lamp

## Product data

### • General Characteristics

Cap-Base	RX7s
Cap-Base Information	na [-]
Bulb	TD
Bulb Finish	Clear
Operating Position	p45 [Parallel +/-45D or Horizontal(HOR)]
Life to 5% failures	5000 hr
Life to 20% failures	8000 hr
Life to 50% failures	10500 hr

### • Light Technical Characteristics

Color Code	842 [CCT of 4200K]
Color Rendering Index	85 Ra8
Color Designation (text)	Cool White
Color Temperature	4200 K
Luminous Flux Lamp EM	12900 Lm
Luminous Efficacy Lamp EM	86 Lm/W
Lumen Maintenance 2000h	80 %
Lumen Maintenance 5000h	75 %
Lumen Maintenance 10000h	70 %
Luminance Average EM	1100 cd/cm <sup>2</sup>
Chromaticity Coordinate X	370 -
Chromaticity Coordinate Y	370 -

### • Electrical Characteristics

Lamp Wattage	150 W
Lamp Wattage EM 25°C, Nominal	150.0 W
Lamp Wattage EM 25°C, Rated	150.0 W
Lamp Voltage	98 V
Lamp Current EM	1.8 A
Ignition Peak Voltage	3500 (min) V
Dimmable	No

### • Environmental Characteristics

Energy Efficiency Label (EEL)	A+
Mercury (Hg) Content	13 mg
Energy consumption kWh/1000h	165 kWh

### • Luminaire Design Requirements

Pinch Temperature	280 (max) C
Bulb Temperature	650 (max) C

### • Product Dimensions

Insertion Length B	132.0 (max) mm
Overall Length C	135.4 (max) mm
Diameter D	23.0 (max) mm
Light Center Length L	66.0 mm
Arc Length O	17.8 mm
Light Center Length L [inch]	2.60 in
Overall Length C [inch]	5.33 (max) in

**PHILIPS**

Diameter D [inch] 0.89 in

type and +/- 10% for CWA or electronic ballasts.]

• **Footnotes**

Footnotes HID 372 [Color characteristics may vary somewhat from one lamp type to another. Time should be allowed for the lamp to stabilize in color when it is turned on for the first time or if for any reason its operating position is changed. This may require several hours' operation, with more than one start. Lamp color and output may change temporarily if the lamp is subjected to excess vibration or shock. Lamp color characteristics may change after long accumulate operating time.]

Footnotes HID 392 [Supply volts must be +/- 5% of rated ballast line volts for reactor

• **Product Data**

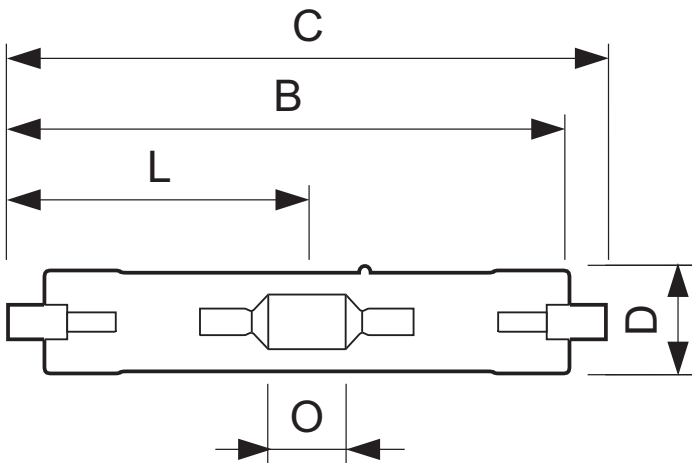
Order code 928076505190  
 Full product code 928076505190  
 Full product name MHN-TD 150W/842 RX7s 1CT  
 Order product name MHN-TD 150W/842 RX7s 1CT/12  
 Pieces per pack 1  
 Packing configuration 12  
 Packs per outerbox 12  
 Bar code on pack - EAN1 8718291215363  
 Bar code on outerbox - EAN3 8718291215370  
 Logistic code(s) - 12NC 928076505190  
 ILCOS code MD/UB-150/842-H-RX7s-25/135.4  
 Net weight per piece 0.028 kg

**Warnings and Safety**

- Use only in totally enclosed luminaire, even during testing (IEC61167, IEC 62035, IEC60598)

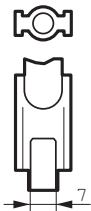
- The luminaire must be able to contain hot lamp parts if the lamp ruptures
- Control gear must include end-of-life protection (IEC61167, IEC 62035)

**Dimensional drawing**



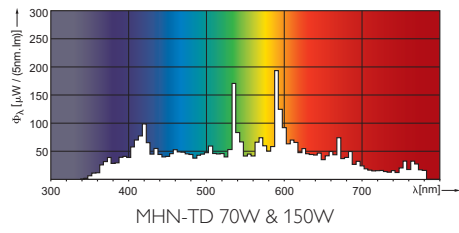
**MHN-TD 150W/842 RX7s 1CT**

Product	C (Max)	D (Max)	O (Norm)
MHN-TD 150W/842 RX7s	135.4	23.0	17.8



RX7s

Photometric data



© 2014 Koninklijke Philips N.V. (Royal Philips)  
All rights reserved.

Specifications are subject to change without notice. Trademarks are the property of Koninklijke Philips N.V. (Royal Philips) or their respective owners.

[www.philips.com/lighting](http://www.philips.com/lighting)

2014, April 11  
data subject to change