



# TL-M Rapid Start Standard Colours

## TL-M RS 40W/33-640 SLV/25

The TL-M RS (Rapid Start) lamp (tube diameter 38 mm) has an external silicon coating and an external ignition strip. It is suitable for situations where low temperatures and high humidity require fast and stable ignition but color rendering is not important. Rapid Start lamps can be ignited without a starter.

### Warnings and Safety

- A lamp breaking is extremely unlikely to have any impact on your health. If a lamp breaks, ventilate the room for 30 minutes and remove the parts, preferably with gloves. Put them in a sealed plastic bag and take it to your local waste facilities for recycling. Do not use a vacuum cleaner.

### Product data

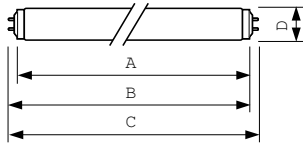
General Information		Operating and Electrical	
Cap-Base	G13 [ Medium Bi-Pin Fluorescent]	Power (Nom)	39.5 W
Life to 50% Failures (Nom)	13000 h	Lamp Current (Nom)	0.430 A
System Description	Rapid Start	Voltage (Nom)	101 V
Light Technical		Controls and Dimming	
Color Code	33-640	Dimmable	Yes
Luminous Flux (Nom)	2850 lm	Approval and Application	
Color Designation	Cool White (CW)	Energy Efficiency Label (EEL)	A
Lumen Maintenance 10000 h (Nom)	73 %	Mercury (Hg) Content (Nom)	8.0 mg
Lumen Maintenance 2000 h (Nom)	90 %	Energy Consumption kWh/1000 h	47 kWh
Lumen Maintenance 5000 h (Nom)	81 %	Product Data	
Correlated Color Temperature (Nom)	4100 K	Full product code	871150072429840
Luminous Efficacy (rated) (Nom)	72 lm/W	Order product name	TL-M RS 40W/33-640 SLV/25
Color Rendering Index (Nom)	63		

## TL-M Rapid Start Standard Colours

EAN/UPC - Product	8711500724298
Order code	928030503371
Numerator - Quantity Per Pack	1
Numerator - Packs per outer box	25
Material Nr. (12NC)	928030503371

Net Weight (Piece)	273.600 g
ILCOS Code	FD-40/41/2B-LC/P-G13

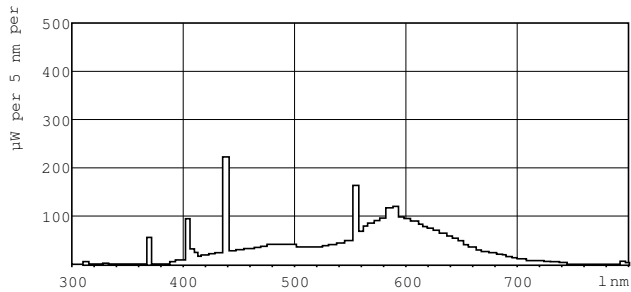
### Dimensional drawing



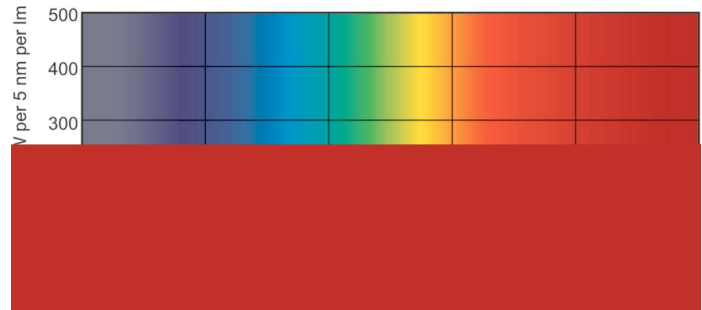
Product	D (max)	A (max)	B (max)	B (min)	C (max)
TL-M RS 40W/33-640	40.5 mm	1199.4 mm	1206.5 mm	1204.1 mm	1213.6 mm
SLV/25					

#### TL-M 40W/33-640 RS

### Photometric data



LDPB\_TL-M-RS\_33-640-Spectral power distribution B/W



LDPO\_TL-M-RS\_33-640-Spectral power distribution Colour

