



# Plusline ES Small

Plusline ES Small 118mm 2y 160W R7s 230V 1BB

Mains-voltage halogen linear lamp with superior energy efficiency. Offers very long lifetime and crisp halogen light. Ideal solution for decorative luminaires.

## Product data

### • General Characteristics

Cap-Base	R7s
Bulb	T4 [T4: .434 inch / 11mm]
Bulb Finish	Clear
Operating Position	any [Any or Universal (U)]
Life to 50% failures	2000 hr
Nominal Lifetime	2000 hr
Rated Lifetime (hours)	2000 hr
Rated Lifetime (years)	2 an

### • Light Technical Characteristics

Color Rendering Index	100 Ra8
Color Temperature	2900 K
Color Temperature Technical	2900 K
Luminous flux lamp	3100 Lm
Rated Luminous Flux	3100 Lm
Luminous Efficacy Lamp	19.4 Lm/W
LLMF - end nominal lifetime	80 (min) %

### • Electrical Characteristics

Rated Wattage	160.0 W
Lamp Wattage	160 W
Lamp Wattage Technical	160 W
Power Factor	1 -
Voltage	230 V
Lamp Current	0.70 A
Dimmable	Yes
Wattage Equivalent	200 W

Starting Time	0.0 s
Warm-up Time to 60% Light Outp	instant full light

### • Environmental Characteristics

Energy Efficiency Label (EEL)	D
Energy consumption kWh/1000h	160 kWh

### • Measuring Conditions

Switching cycle	8000X
-----------------	-------

### • Luminaire Design Requirements

Pinch Temperature	350 (max) C
Bulb Temperature	900 (max) C

### • Product Dimensions

Insertion Length B	112.6 (min), 114.2 (nom), 115.8 (max) mm
Overall Length C	118 (max) mm
Diameter D	11 (max) mm

### • Product Data

Order code	924587544210
Full product code	924587544210
Full product name	Plusline ES Small 118mm 2y 160W R7s 230V 1BB
Order product name	Plusline ES 118mm 2y 160W R7s 230V 1BB
Pieces per pack	1
Packing configuration	10X10CC

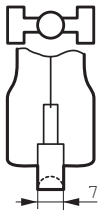
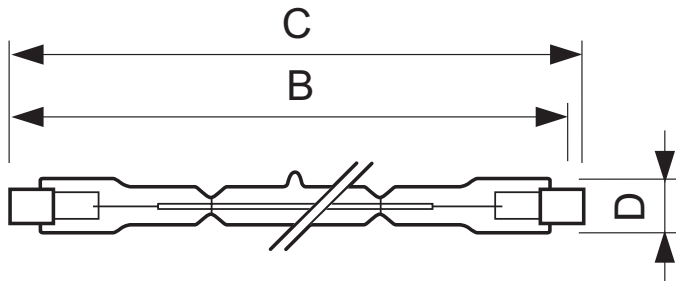
# PHILIPS

## Plusline ES Small

Packs per outerbox 100  
Bar code on pack - EAN1 8727900852196  
Bar code on intermediate packing - EAN2 8727900852202

Bar code on outerbox - EAN3 8727900852219  
Logistic code(s) - 12NC 924587544210  
Net weight per piece 9.000 gr

### Dimensional drawing



R7s

### Plusline ES Small 118mm 2y 160W R7s 230V 1BB

Product	B (Min)	B (Norm)	B (Max)	C (Max)	D (Max)
DESmall 118mm 2y 160W R7s 230V T11 CL	112.6	114.2	115.8	118	11



© 2014 Koninklijke Philips N.V. (Royal Philips)  
All rights reserved.

Specifications are subject to change without notice. Trademarks are the property of Koninklijke Philips N.V. (Royal Philips) or their respective owners.

[www.philips.com/lighting](http://www.philips.com/lighting)

2014, October 31  
data subject to change