



Plusline ES Small

Plusline ES Small 118mm 2y 120W R7s 230V 1BB

Mains-voltage halogen linear lamp with superior energy efficiency. Offers very long lifetime and crisp halogen light. Ideal solution for decorative luminaires.

Product data

• General Characteristics

Cap-Base	R7s
Bulb	T4 [T4: .434 inch / 11mm]
Bulb Finish	Clear
Operating Position	any [Any or Universal (U)]
Life to 50% failures	2000 hr
Nominal Lifetime	2000 hr
Rated Lifetime (hours)	2000 hr
Rated Lifetime (years)	2 an

• Light Technical Characteristics

Color Rendering Index	100 Ra8
Color Temperature	2900 K
Color Temperature Technical	2900 K
Luminous flux lamp	2220 Lm
Rated Luminous Flux	2220 Lm
Luminous Efficacy Lamp	18.5 Lm/W
LLMF - end nominal lifetime	80 (min) %

• Electrical Characteristics

Rated Wattage	120.0 W
Lamp Wattage	120 W
Lamp Wattage Technical	120 W
Power Factor	1 -
Voltage	230 V
Lamp Current	0.52 A
Dimmable	Yes
Wattage Equivalent	150 W

Starting Time	0.0 s
Warm-up Time to 60% Light Outp	instant full light

• Environmental Characteristics

Energy Efficiency Label (EEL)	D
Energy consumption kWh/1000h	120 kWh

• Measuring Conditions

Switching cycle	8000X
-----------------	-------

• Luminaire Design Requirements

Pinch Temperature	350 (max) C
Bulb Temperature	900 (max) C

• Product Dimensions

Insertion Length B	112.6 (min), 114.2 (nom), 115.8 (max) mm
Overall Length C	118 (max) mm
Diameter D	11 (max) mm

• Product Data

Order code	924587444210
Full product code	924587444210
Full product name	Plusline ES Small 118mm 2y 120W R7s 230V 1BB
Order product name	Plusline ES 118mm 2y 120W R7s 230V 1BB
Pieces per pack	1
Packing configuration	10X10CC

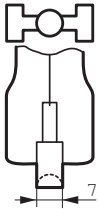
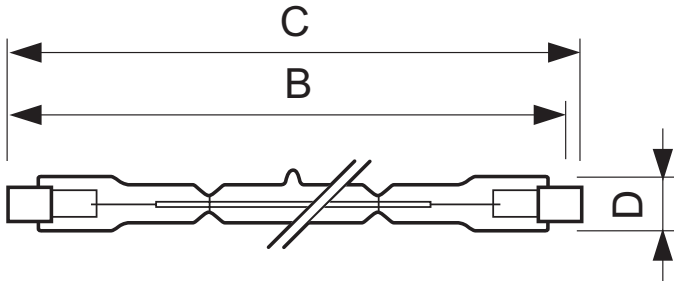
PHILIPS

Plusline ES Small

Packs per outerbox 100
Bar code on pack - EAN1 8727900852165
Bar code on intermediate packing - EAN2 8727900852172

Bar code on outerbox - EAN3 8727900852189
Logistic code(s) - 12NC 924587444210
Net weight per piece 9.000 gr

Dimensional drawing



R7s

Plusline ES Small 118mm 2y 120W R7s 230V 1BB

Product	B (Min)	B (Norm)	B (Max)	C (Max)	D (Max)
DEsmall 118mm 2y 120W R7s 230V T11 CL	112.6	114.2	115.8	118	11



© 2014 Koninklijke Philips N.V. (Royal Philips)
All rights reserved.

Specifications are subject to change without notice. Trademarks are the property of Koninklijke Philips N.V. (Royal Philips) or their respective owners.

www.philips.com/lighting

2014, October 31
data subject to change