



Plusline ES Small

Plusline ES Small 118mm 2y 240W R7s 230V 1BB

Mains-voltage halogen linear lamp with superior energy efficiency. Offers very long lifetime and crisp halogen light. Ideal solution for decorative luminaires.

Product data

• General Characteristics

| | |
|------------------------|----------------------------|
| Cap-Base | R7s |
| Bulb | T4 [T4: .434 inch / 11mm] |
| Bulb Finish | Clear |
| Operating Position | any [Any or Universal (U)] |
| Life to 50% failures | 2000 hr |
| Nominal Lifetime | 2000 hr |
| Rated Lifetime (hours) | 2000 hr |
| Rated Lifetime (years) | 2 an |

• Light Technical Characteristics

| | |
|-----------------------------|------------|
| Color Rendering Index | 100 Ra8 |
| Color Temperature | 2900 K |
| Color Temperature Technical | 2900 K |
| Luminous flux lamp | 4900 Lm |
| Rated Luminous Flux | 4900 Lm |
| Luminous Efficacy Lamp | 20.4 Lm/W |
| LLMF - end nominal lifetime | 80 (min) % |

• Electrical Characteristics

| | |
|------------------------|---------|
| Rated Wattage | 240.0 W |
| Lamp Wattage | 240 W |
| Lamp Wattage Technical | 240 W |
| Power Factor | 1 - |
| Voltage | 230 V |
| Lamp Current | 1.04 A |
| Dimmable | Yes |
| Wattage Equivalent | 300 W |

| | |
|--------------------------------|--------------------|
| Starting Time | 0.0 s |
| Warm-up Time to 60% Light Outp | instant full light |

• Environmental Characteristics

| | |
|-------------------------------|---------|
| Energy Efficiency Label (EEL) | D |
| Energy consumption kWh/1000h | 240 kWh |

• Measuring Conditions

| | |
|-----------------|-------|
| Switching cycle | 8000X |
|-----------------|-------|

• Luminaire Design Requirements

| | |
|-------------------|-------------|
| Pinch Temperature | 350 (max) C |
| Bulb Temperature | 900 (max) C |

• Product Dimensions

| | |
|--------------------|--|
| Insertion Length B | 112.6 (min), 114.2 (nom), 115.8 (max) mm |
| Overall Length C | 118 (max) mm |
| Diameter D | 11 (max) mm |

• Product Data

| | |
|-----------------------|--|
| Order code | 924572044210 |
| Full product code | 924572044210 |
| Full product name | Plusline ES Small 118mm 2y 240W R7s 230V 1BB |
| Order product name | Plusline ES 118mm 2y 240W R7s 230V 1BB |
| Pieces per pack | 1 |
| Packing configuration | 10X10CC |

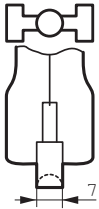
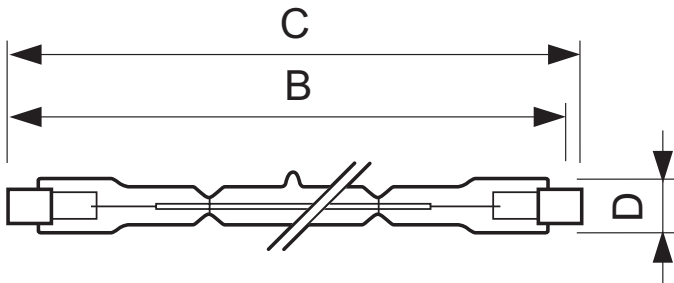
PHILIPS

Plusline ES Small

Packs per outerbox 100
Bar code on pack - EAN1 8727900853803
Bar code on intermediate packing - EAN2 8727900853810

Bar code on outerbox - EAN3 8727900853827
Logistic code(s) - 12NC 924572044210
ILCOS code HDG//RS-240-230-R7s-114,2
Net weight per piece 9.000 gr

Dimensional drawing



R7s

Plusline ES Small 118mm 2y 240W R7s 230V 1BB

| Product | B (Min) | B (Norm) | B (Max) | C (Max) | D (Max) |
|---------------------------------------|---------|----------|---------|---------|---------|
| DESmall 118mm 2y 240W R7s 230V T11 CL | 112.6 | 114.2 | 115.8 | 118 | 11 |



© 2014 Koninklijke Philips N.V. (Royal Philips)
All rights reserved.

Specifications are subject to change without notice. Trademarks are the property of Koninklijke Philips N.V. (Royal Philips) or their respective owners.

www.philips.com/lighting

2014, October 31
data subject to change