



HF-Matchbox Blue

HF-M BLUE 124 SH TL/TL5/PL-L 230-240V

HF-Matchbox Blue is an affordable, reliable, compact, lightweight and high-frequency ballast for use with system wattages below 25 W in combination with TL mini, TL-D, TL5 and TL5c, PL-T/C, and PL-L/S lamps. The HF-M Blue range has a robust design, meets all relevant international safety and performance standards and has an energy efficiency index (CELMA EEI) of A2.

Product data

• General Characteristics

Application code	mk1
Rated Lamptype	TL/TL5/PL-L
Rated Number of Lamps	1 piece
Rated Ballast-Lamp Power	24
Line Voltage	230-240 V
Line Frequency	50/60 Hz
Housing	SH
Lifetime 90% surv.@Tcaselife	25000 hr

• Operating Characteristics

Automatic restart	Yes
Maximum ignition time	0.5 (max) s
Mains voltage safety (AC)	-10%/+10%
Mains voltage performance (AC)	-8%/+6%
Power losses gear	1.9-2.2 W
PowerFactor 100% output power	0.64 -
Battery voltage lamp ignition	194-254 V
Overvoltage protection 320Vac	0.03 hr
Max ballast on MCB(16A type B)	60 x

• Wiring Characteristics

Color input terminals	Orange
Color output terminals	Grey

Conn.type input terminals	Insert
Conn.type output terminals	Insert
Max. cable length Device/Lamp	1.50 m
Max. cable length Hot Wires	0.30 m
Striplength	8.0-9.0 mm
Wcs Input terminals	0.50-1.50 mm ²
Wcs Output terminals	0.50-1.50 mm ²

• Temperature Characteristics

F-marking	Yes
T-case maximum	75 (max) C
T-ambient	-10 (min), 40 (max) C

• Product Dimensions

Length A1	94.0 mm
Fixing Hole Distance	84.0 mm
Length A2	
Width B1	40.0 mm
Height C1	22.0 mm
Fixing Hole Distance	10.0 mm
Height C2	
Fixing Hole Diameter D1	4.4 mm

• Approval & Application Chars

CE marking	Yes
ENEC certificate	No
VDE certificate	Yes
UL certificate	No

PHILIPS

HF-Matchbox Blue

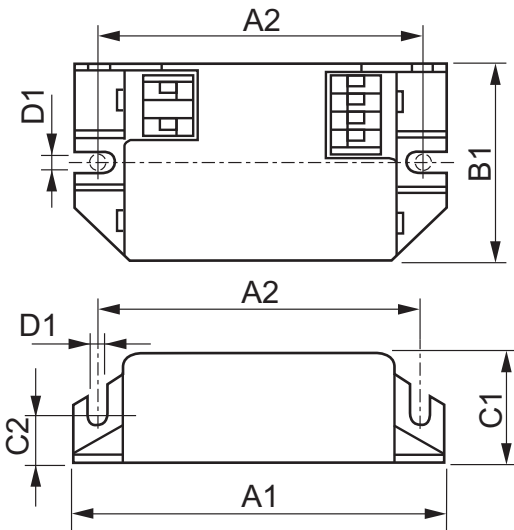
CB Certificate Yes

• Product Data

Order code 913700417966
 Full product code 913700417966
 Full product name HF-M BLUE 124 SH TL/TL5/PL-L 230-240V
 Order product name HF-M BLUE 124 SH TL/TL5/PL-L 230-240V

Pieces per pack 1
 Packing configuration 50
 Packs per outerbox 50
 Bar code on pack - EAN1 8711500536389
 Bar code on outerbox - EAN3 8711500536396
 Logistic code(s) - 12NC 913700417966
 Net weight per piece 0.040 kg

Dimensional drawing



HF-M BLUE 124 SH TL/TL5/PL-L 230-240V

Product	A1 (Norm)	A2 (Norm)	B1 (Norm)	C1 (Norm)	C2 (Norm)	D1 (Norm)
HF-M BLUE 124 SH TL/TL5/PL-L 230-240V	94.0	84.0	40.0	22.0	10.0	4.4



© 2014 Koninklijke Philips N.V. (Royal Philips)
 All rights reserved.

Specifications are subject to change without notice. Trademarks are the property of Koninklijke Philips N.V. (Royal Philips) or their respective owners.

www.philips.com/lighting

2014, April 11
 data subject to change